

EDDY LEE

Eddy Lee's figurative surrealist portrait paintings on exposed wood depict emotive sirens who evoke a sense of mystery and seductiveness. The artist's work is inspired by the works of Audrey Kawasaki, lifestyle illustrators of the 60's such as Robert McGinnis and Bob Peak, and anime. Lee's colorful, intriguing women are painted with acrylic and gouache on hand-built cradled wood panels.

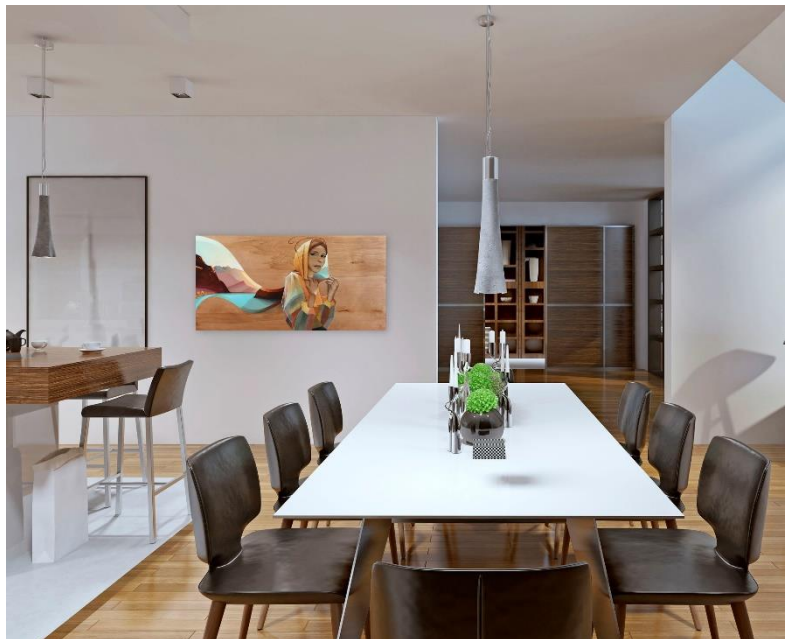


His original artworks combine geometric elements with innocent women portraits seeking to trigger emotions, rather than communicating specific explanations. He reconciles the unconscious with rational life, exploring the power of dreams, embracing automatism, and freeing his subjects from the constraints of conscious thought. He aims to slow down and scrutinize our intuitive responses to new information and to gradually deliberate the depths of the artworks.

Originally from Seattle, Washington, Eddy Lee relocated to Los Angeles in late 2012 to pursue a full-time career as a fine artist. He started his career on the Venice Beach Boardwalk and quickly gained a large following across the United States with exhibitions in San Francisco, Las Vegas, and Los Angeles.

EXHIBITIONS

- 2020-24 Artplex Gallery, Los Angeles, CA
- 2019 Art Attack Gallery, Santa Monica CA
First Friday, Las Vegas NV
Giant Robot, Santa Monica CA
- 2018 Lot 613, Los Angeles CA
Oakland Metro Playhouse, Oakland CA
Giant Robot, Santa Monica CA
First Friday, Las Vegas, NV
- 2017 EK Gallery, Los Angeles CA
Giant Robot, Santa Monica CA
Oakland First Friday, Oakland CA
- 2016 Gibson Gallery, Santa Monica CA
Giant Robot, Santa Monica CA
Oakland First Friday, Oakland CA
- 2015 Street Art Loft, Agoura Hills CA
Oakland First Friday, Oakland CA



With its reach extending to Zurich and Los Angeles, Artplex Gallery is a globally recognized contemporary art destination. The large art gallery curates art that seamlessly integrates design and luxury, brought to you by artists who redefine the boundaries of talent and technique.